

[View this email in your browser](#)



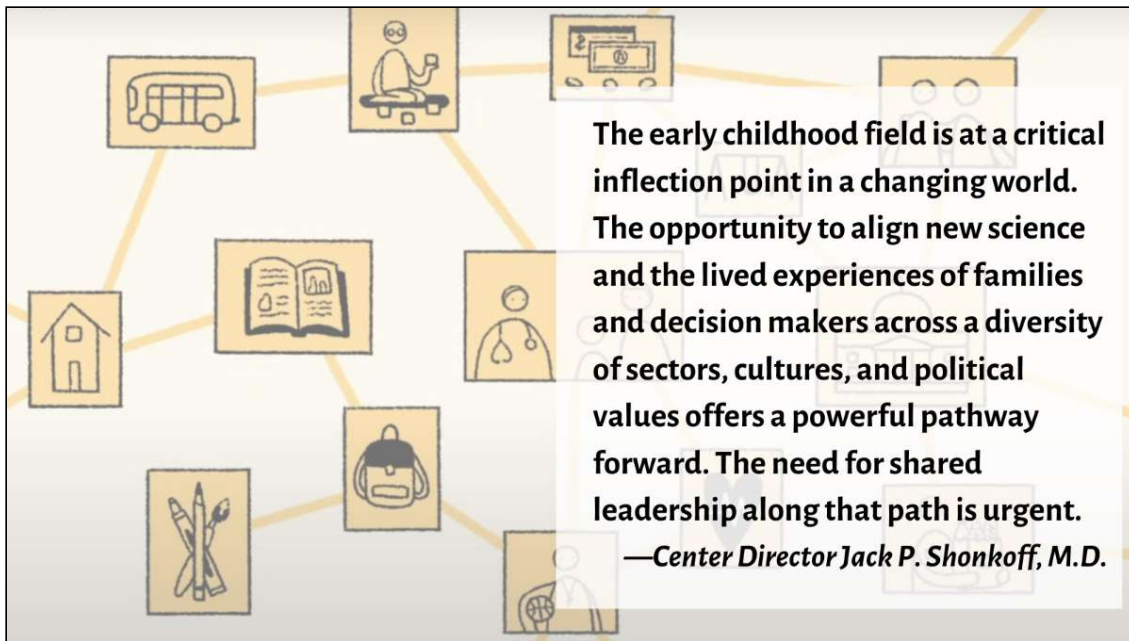
January 2022

*Monthly updates featuring resources, events, and more
from the Center on the Developing Child at Harvard University*

A Call to Action

**Re-Envisioning Early Childhood Policy and Practice in a World of Striking
Inequality and Uncertainty**

New Science + More Diverse Voices = Greater Impact



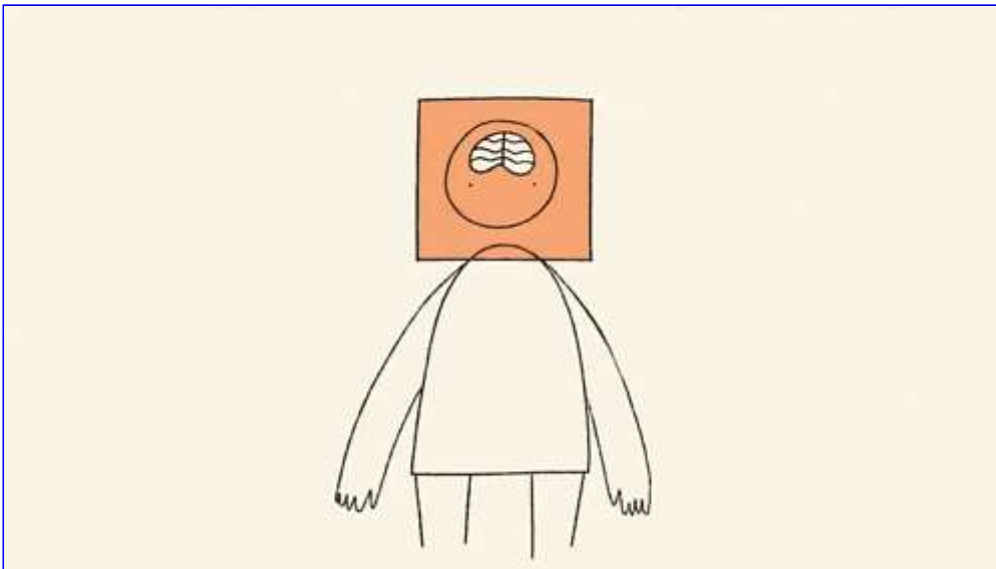
As a follower of our Center, you are well aware of three core scientific concepts that have driven increased investments and documented benefits for early childhood policies and services over the past two decades—the impacts of early experiences on brain architecture, the importance of responsive “serve and return” interactions, and the disruptive effects of toxic stress.

As the science of development has continued to move forward, advances in knowledge now inspire us to build on this still powerful “core story” (which we are calling ECD 1.0) and introduce ECD 2.0. Looking ahead and facing the ongoing challenges of a global pandemic, systemic racism and other inequities that undermine healthy development, and massive disruptions of essential services, ECD 2.0 presents a broader framework for aligning cutting-edge science with the lived experiences of families, policymakers, and service providers to build a brighter future for young children facing adversity and the adults who care for them.

Read more

New Guide

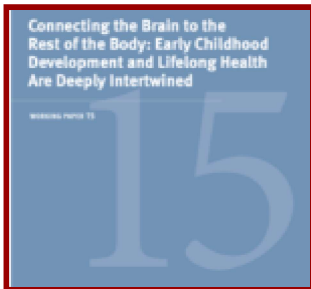
Introducing ECD 2.0: A New Framework for Science-Informed Investment in the Early Foundations of Health and Development



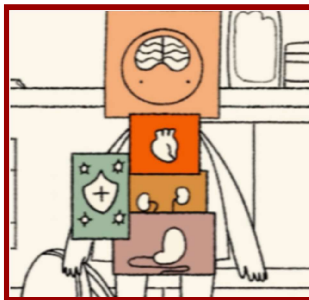
The resources in this guide to ECD 2.0 are designed to support the efforts of change agents across a rich diversity of sectors, cultures, geographies, and political perspectives to drive a critical re-envisioning of the early childhood field.

[Visit the guide](#)

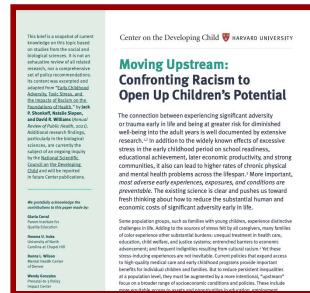
Related Resources:



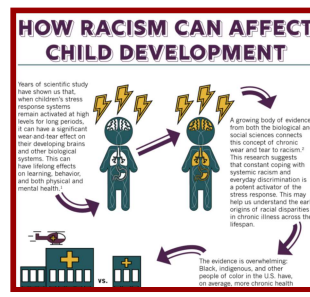
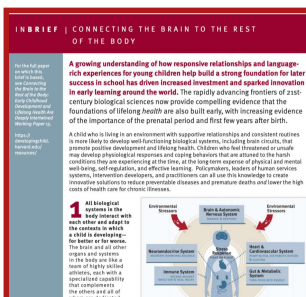
WORKING PAPER:
Connecting the Brain to the Rest of the Body: Early Childhood Development and Lifelong Health Are Deeply Intertwined



VIDEO:
How Early Childhood Experiences Affect Lifelong Health and Learning



BRIEF:
Moving Upstream: Confronting Racism to Open Up Children's Potential



BRIEF:

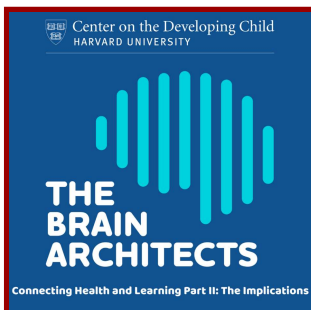
InBrief: Connecting the Brain to the Rest of the Body

BRIEF:

Health and Learning are Deeply Interconnected in the Body: An Action Guide for Policymakers

INFOGRAPHIC:

How Racism can Affect Child Development



PODCAST:

Connecting Health and Learning Part II: The Implications



**BRIEFS | MULTIMEDIA | REPORTS & WORKING PAPERS
PRESENTATIONS | TOOLS & GUIDES**

developingchild.harvard.edu

Copyright © 2022 Center on the Developing Child at Harvard University, All rights reserved.

Unsubscribe from this list

Update subscription preferences

Sign up for this newsletter