



**MMIWG in
Hawai'i**

**‘Ihilani Lasconia
2/16/23**

Aloha!



- 'Ihilani Lasconia she/they/ 'o ia
- Waimānalo O'ahu
- Ph.D Student Polisci (Indigenous Pols.)
- M.Ed - Education
- B.A Ethnic Studies + Pols + WGSS
- Artist (hip hop + spoken word)
- Community organizer (Af3irm)
- Aunty, sister, daughter, grand daughter.

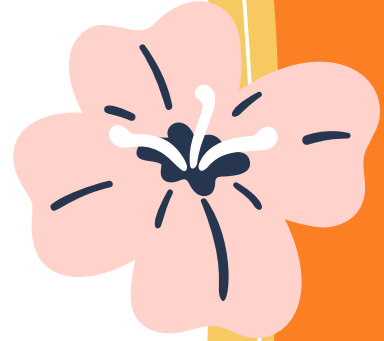
We Are
Militant
because
We Matter



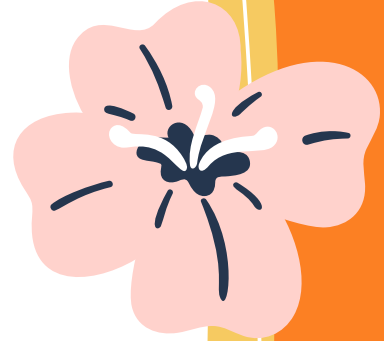
Content Warning:

**Today we will be covering:
Gender based violence, sex
trafficking, the sex trade.**

MMIWG
Missing and
Murdered Indigenous
Women and Girls



MMIWG in the Context of Hawai'i





Key points in the history of Hawai'i that have contributed to MMIWG



1778

Not the very beginning... But a marker of the introduction to Western notions of gender and patriarchy in Hawai'i



1893

Illegal overthrow of the Hawaiian Kingdom. Increased commodification of land and women.



1941

WW2. Increased militarization and tourism in Hawai'i. "Legal" establishment of brothels to aid soldiers.



2022

Declaration of MMIWG as a crisis in Hawai'i. Combatting the crisis with new data.



HOLOI Ā NALO WĀHINE 'ŌIWI:

Missing and Murdered Native Hawaiian Women
and Girls Task Force Report



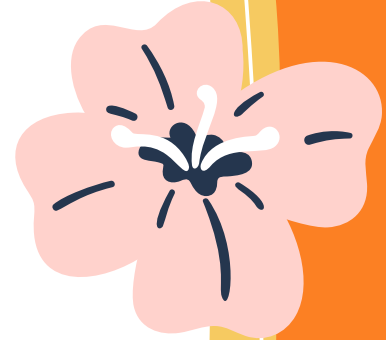
May 5, 2022 marked the largest coordinated, multi-island commemoration of National Missing and Murdered Indigenous Women, Girls, and Two-Spirit (MMIWG2S) Awareness Day in Hawai'i to date. The unity of diverse ceremonies and communities generated strong emotions and relationships that have carried this report forward. Photo: Jason Lees

The first ever MMIWG
report in Hawai'i!

What does this report do?

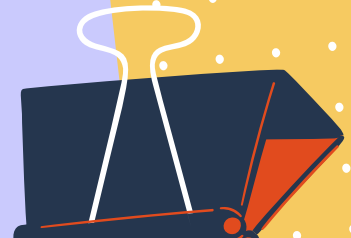
Why weren't there any
before?

What does this mean now?



Data Gathering and Methods

- 1) Sifting through police reports. (no aggregated data up until this year)
- 2) Working with community shelters to identify the flow of people and gather stories.
- 3) Sting operations to catch buyers. (Operation Keiki Shield)



38% of sex buyers are U.S Soldiers

This is especially alarming considering that only 2-5% of the population in Hawai'i are military.

43% of trafficking occurred in Waikiki

Nearly all girls trafficked in this location are native Hawaiian.

Hawai'i has the eighth highest rate of missing persons per capita

Many other places on the continent are on/near reservations.



Three Main Takeaways



You cannot separate the MMIWG crisis from colonization and militarization



Neoliberalism + white feminism seek to erase the foundation of this crisis.



Combating this crisis will be a collective struggle across oceans and continents. Together, we will win.



**What questions do
you have about
MMIWG in Hawai'i?**





Mahalo nui :)

Email: cierak21@hawaii.edu
Socials: @inalihi